

# Installing Pro3000 Software from the Internet

<p>Valpar Technical Support is available at 800-528-7070 ext 1. between the hours of 9:00 am and 4:00 pm Mountain <u>Standard</u> Time, Monday through Thursday.</p>	<p><b>Tech Support</b></p>
<p><b>If you are replacing your current Pro3000 computer and you can still access your current Pro3000 computer, please do the following before installing Pro3000 on the new computer:</b></p> <ol style="list-style-type: none"><li>1) Deauthorize Pro3000 on the current computer.</li><li>2) To migrate your Pro3000 data from the current computer to the new computer, open the Pro3000 directory (normally c:\p3kroot\p3kv2) and copy these files to a USB thumb drive: Pro3000.MDB Pro3k.CPC Pro3k.DIS Pro3k.ETH Any subdirectories that were created to save reports in.</li></ol>	
<p><b>From an ADMINISTRATOR LOGIN, download the installation files from:</b></p> <p><a href="http://www.sigi3.org/downloads/P3Kinternet.exe">http://www.sigi3.org/downloads/P3Kinternet.exe</a></p>	
<p><b>Run P3Kinternet.exe</b></p> <p>This is a standard Windows setup program.</p> <p>It will create directory c:\p3kroot\setup and put all of the Pro3000 installation files in it.</p> <p>Next, it will run the actual Pro3000 setup program which will present a series of dialog boxes.</p>	

## Pro3000 v2 Installation Disk

Do a new installation, add modules, or update your current Pro3000.

Install

Install Adobe Acrobat Reader so you can view the manual(s) on your computer.

Acrobat

View the manual from the CD.

View Manual

Click the Install button to start the process.

Do a new Installation of Pro3000

New

Add New Modules and/or add More Seats to existing modules.

Add

Update an existing Pro3000 installation or install SUS.

Update

Click the New button.



Check the 'Stand Alone' button to install Pro3000 on a single computer.

If you are installing to a network please see the section below on Network Installation.

Click OK



This is where the Pro3000 files will reside.

It is recommended that you use the default directory that is presented in the text box.


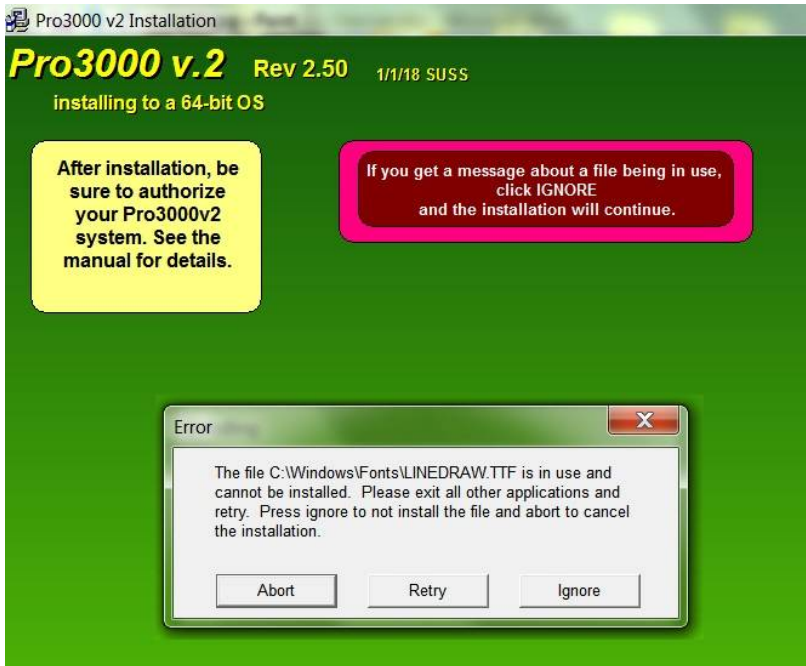
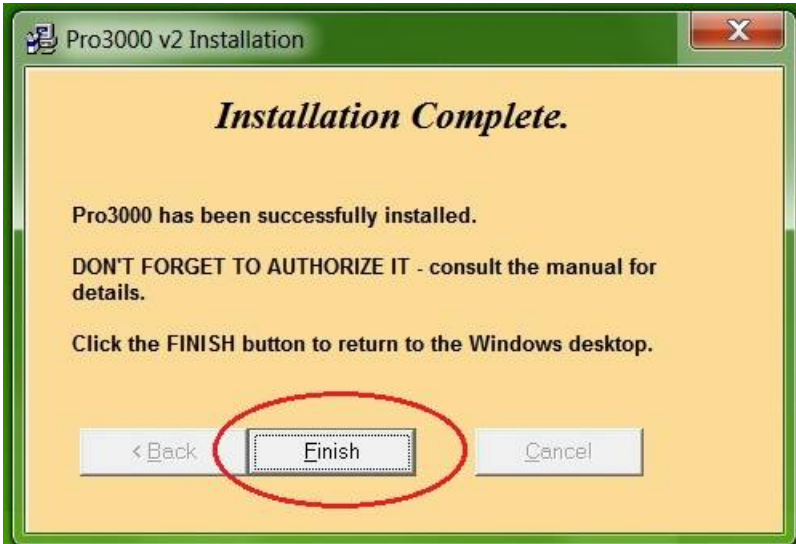
Click Next



This determines where shortcuts (icons) to Pro3000 programs will be placed.

It is recommended that you use the default choice.

Click OK

 <p>Pro3000 v2 Installation</p> <p><b>Ready to Install Pro3000</b></p> <p>To: C:\P3kroot\P3Kv2</p> <p>Cancel Continue</p>	<p>Ready to go. Click Continue.</p>
 <p>Pro3000 v2 Installation</p> <p><b>Pro3000 v.2</b> Rev 2.50 1/1/18 SUSS</p> <p>installing to a 64-bit OS</p> <p>After installation, be sure to authorize your Pro3000v2 system. See the manual for details.</p> <p>If you get a message about a file being in use, click IGNORE and the installation will continue.</p> <p>Error</p> <p>The file C:\Windows\FonTS\LINEDRAW.TTF is in use and cannot be installed. Please exit all other applications and retry. Press ignore to not install the file and abort to cancel the installation.</p> <p>Abort Retry Ignore</p>	<p>You may see this message one or more times during installation.</p> <p>Always click the Ignore button.</p>
 <p>Pro3000 v2 Installation</p> <p><b>Installation Complete.</b></p> <p>Pro3000 has been successfully installed.</p> <p>DON'T FORGET TO AUTHORIZE IT - consult the manual for details.</p> <p>Click the FINISH button to return to the Windows desktop.</p> <p>&lt; Back Finish Cancel</p>	<p>Success!</p> <p>Click Finish.</p>

..... **IMPORTANT** .....

Users of the software must have 'modify' rights to the installation directory.

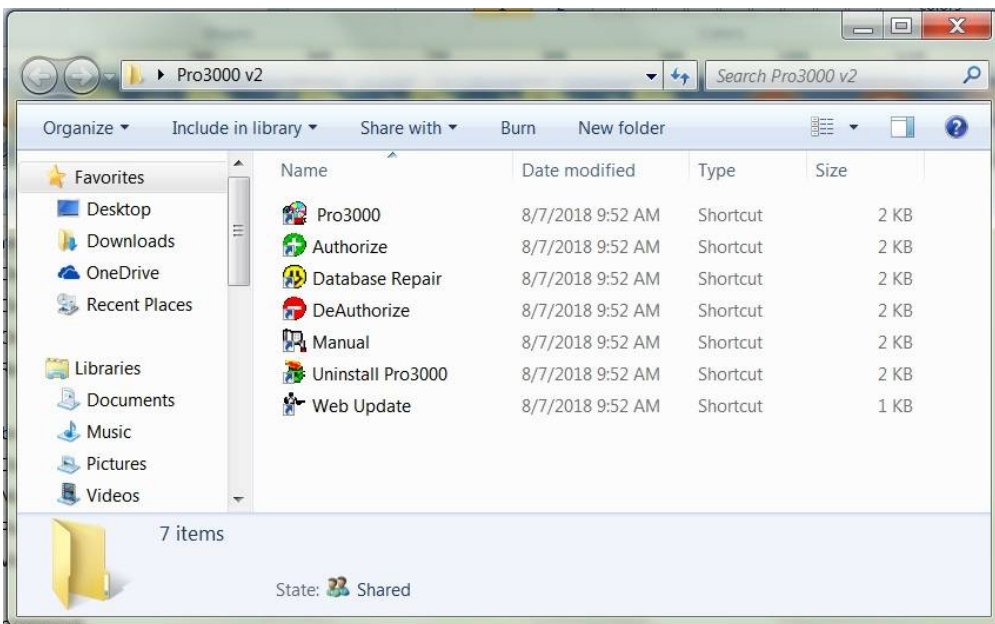
Microsoft Word is used to generate reports, so it must be installed on the computer and macros must be enabled.

These are beyond Valpar's control.  
If there is a problem, please consult your computer guru.

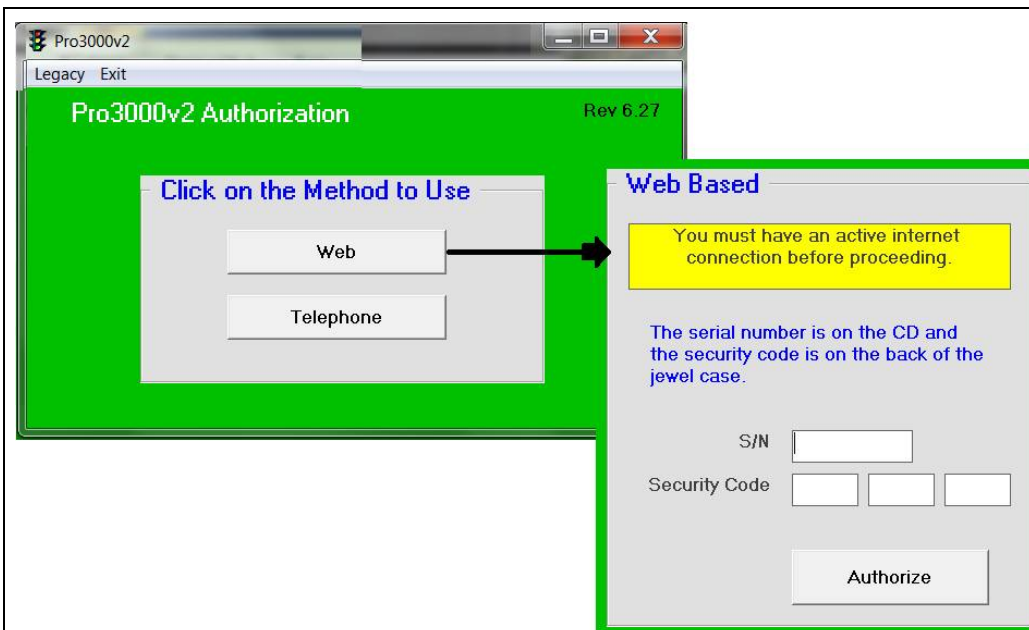
..... **IMPORTANT** .....



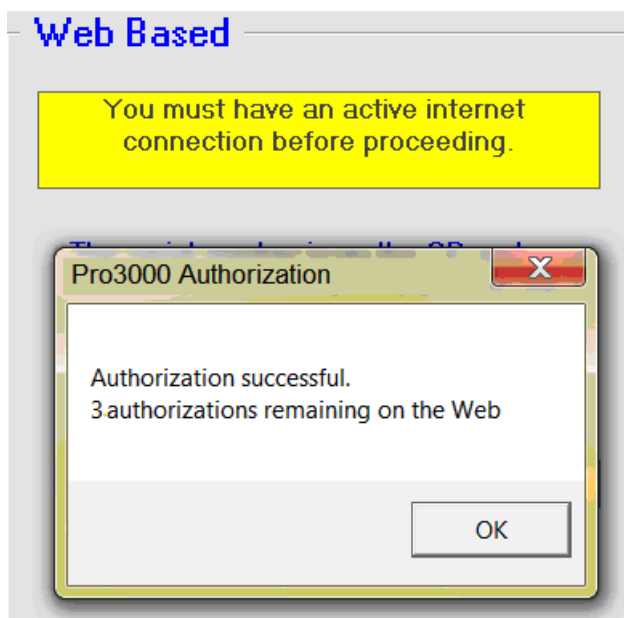
When the installation is done it will return to the desktop.  
You should see a new folder like the one shown.  
If not, press the F5 key to refresh the desktop.  
Double-click the folder to open it.



These are the Pro3000 shortcuts.  
Before you can run the software it must be authorized.  
Double-click the 'Authorize' shortcut.



Click the Web button and then enter your serial number and security code.  
 Click Authorize.  
 The program will contact Valpar's web site and transfer an authorization token to your computer.



The Authorization program will give either a message like the one to the left, indicating success, or a failure message.  
 If the program simply quits with no message then you need to run the update described at URL below the image to the left and try the authorization again.

<http://www.sigi3.org/downloads/VWAupdate.pdf>

<p>Once authorization is complete, double-click the Pro3000 shortcut to run the software.</p> <p>You may get a message similar to the one at the right. The install-from-the-Internet process installs the latest version of Pro3000. Each version carries a SUS date and you cannot run a version that has a SUS date later than your SUS expiration date.</p> <p>If this message appears you will have the option to run the Update from Web process which will download and install the latest version of Pro3000 that is available to you.</p>	<p><b>Your Software Update Service expired prior to the date of this version of Pro3000</b></p>
<p>If you saved data from your current Pro3000 computer on a USB thumb drive now is the time to copy everything that was saved to the new Pro3000 directory.</p>	
<p>Note that there is shortcut to the Pro3000 manual in the desktop folder.</p>	
<p>Valpar Technical Support is available at 800-528-7070 ext 1. between the hours of 9:00 am and 4:00 pm Mountain <u>Standard</u> Time, Monday through Thursday.</p>	<p><b>Tech Support</b></p>

## Network Installation

- 1) Install Pro3000 to the server by selecting Network under Installation Type.
- 2) For each work station that will run Pro3000, do a Network Station install at the work station using `\p3kroot\setup\setup.exe`. The installation program will ask for the network path from step 1.
- 3) Authorize Pro3000 *from a work station*, as described above. You only need to do this once. The authorization resides on the server and is accessed by all of the work stations.
- 4) You purchased a fixed number of 'seats' with Pro3000. At most, that many work stations can be logged into Pro3000 at any one time. When a user exits Pro3000 it frees up a seat for any other work station to use.