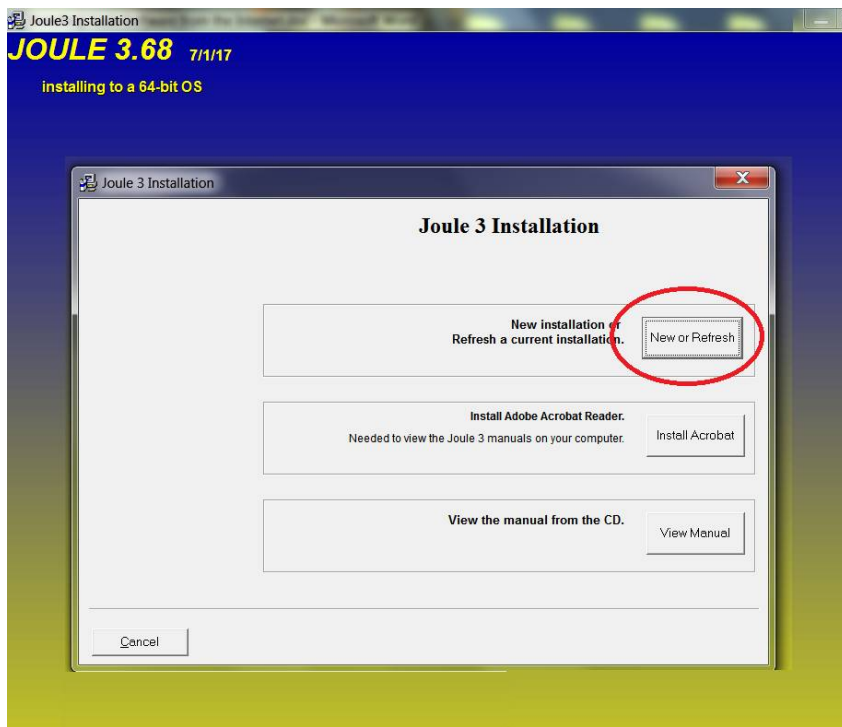


Installing Joule Software from the Internet

<p>Valpar Technical Support is available at 800-528-7070 ext 1. between the hours of 9:00 am and 4:00 pm Mountain <u>Standard</u> Time, Monday through Thursday.</p>	<p>Tech Support</p>									
<p>If you are replacing your current Joule computer and you can still access your current Joule computer, please do the following before installing Joule on the new computer:</p> <ol style="list-style-type: none">1) Deauthorize Joule on the current computer.2) To migrate your Joule data from the current computer to the new computer, open the Joule directory (normally c:\joule3) and copy these files to a USB thumb drive: <table data-bbox="347 747 1292 919"><tr><td>Joule3.MDB</td><td>Plan.DAT</td><td>Protocol.DAT</td></tr><tr><td>Metplan.DAT</td><td>MetProtocol.DAT</td><td>ComBlurbs.txt</td></tr><tr><td>RecBlurbs.TXT</td><td>The PICS subdirectory</td><td>All files that start with '!</td></tr></table><p>Any subdirectories that were created to save reports in.</p>		Joule3.MDB	Plan.DAT	Protocol.DAT	Metplan.DAT	MetProtocol.DAT	ComBlurbs.txt	RecBlurbs.TXT	The PICS subdirectory	All files that start with '!
Joule3.MDB	Plan.DAT	Protocol.DAT								
Metplan.DAT	MetProtocol.DAT	ComBlurbs.txt								
RecBlurbs.TXT	The PICS subdirectory	All files that start with '!								
<p>From an ADMINISTRATOR LOGIN, download the installation files from:</p> <p>http://www.sigi3.org/downloads/Jouleinternet.exe</p>										
<p>Run Jouleinternet.exe</p> <p>This is a standard Windows setup program. It will create directory c:\joule3 and put all of the Joule installation files in it.</p> <p>Next, it will run the actual Joule setup program which will present a series of dialog boxes.</p>										



Click the New or Refresh button to start the process.



Check the Stand Alone button to install Joule on a single computer.

If you are installing to a network please see the section below on Network Installation.

Click OK



This is where the Joule files will reside.

It is recommended that you use the default directory that is presented in the text box.

Click **Next**.

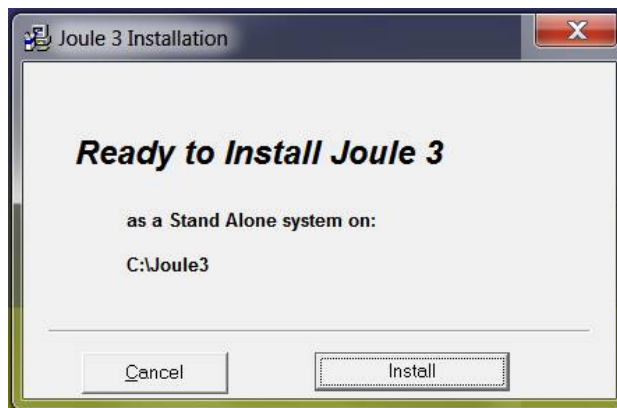
To change the directory, click the **Browse** button.



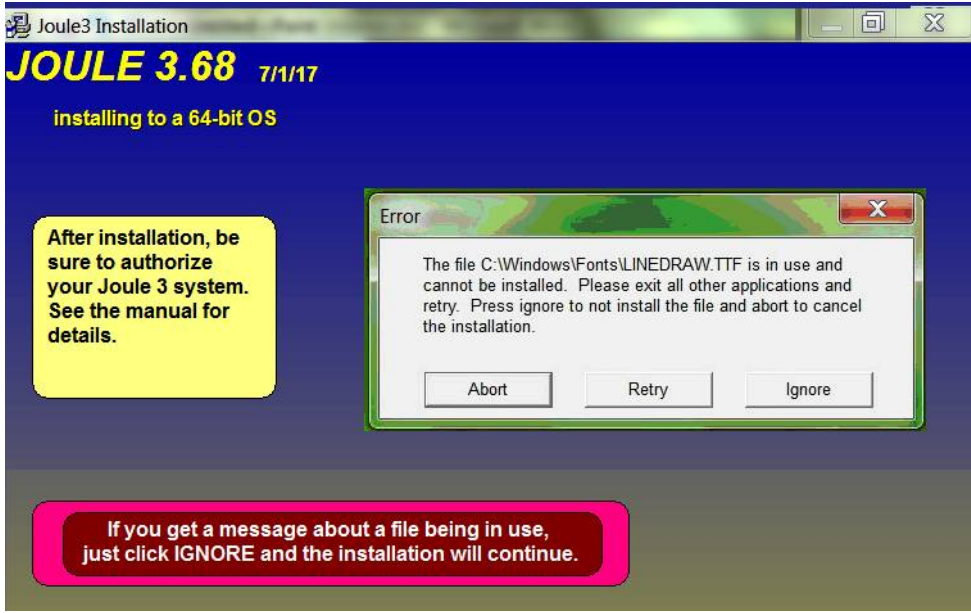
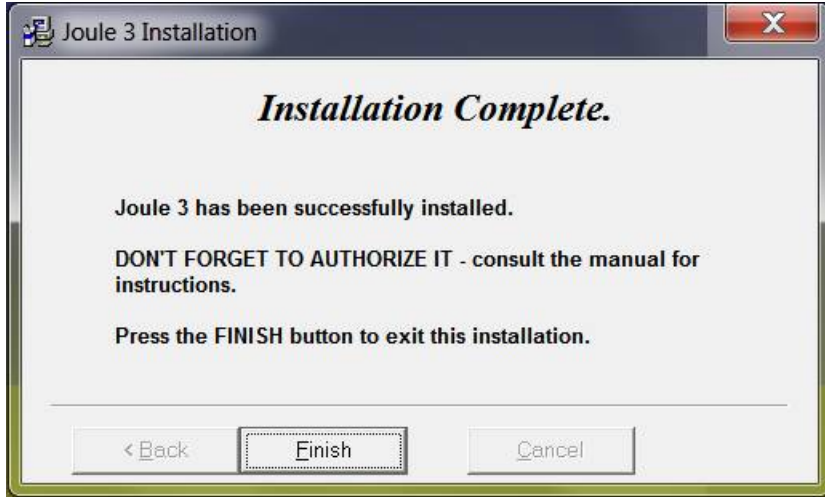
This determines where shortcuts (icons) to Joule programs will be placed.

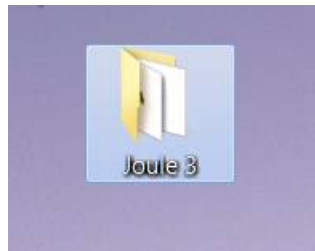
It is recommended that you use the default choice.

Click **OK**



Ready to go. Click **Install**.

 <p>Joule 3.68 7/1/17 installing to a 64-bit OS</p> <p>After installation, be sure to authorize your Joule 3 system. See the manual for details.</p> <p>Error The file C:\Windows\Fonts\LINEDRAW.TTF is in use and cannot be installed. Please exit all other applications and retry. Press ignore to not install the file and abort to cancel the installation.</p> <p>If you get a message about a file being in use, just click IGNORE and the installation will continue.</p>	<p>You may see this message one or more times during installation.</p> <p>Always click the <u>Ignore</u> button.</p>
 <p>Joule 3 Installation</p> <p><i>Installation Complete.</i></p> <p>Joule 3 has been successfully installed.</p> <p>DON'T FORGET TO AUTHORIZE IT - consult the manual for instructions.</p> <p>Press the FINISH button to exit this installation.</p> <p>< Back Finish Cancel</p>	<p>Success! Click <u>Finish</u>.</p>
<p>..... IMPORTANT</p> <p>Users of the software <u>must have 'modify' rights</u> to the installation directory.</p> <p><u>Microsoft Word</u> is used to generate reports, so it must be installed on the computer and <u>macros must be enabled</u>.</p> <p>..... IMPORTANT</p>	<p>These are beyond Valpar's control.</p> <p>If there is a problem, please consult your computer guru.</p>

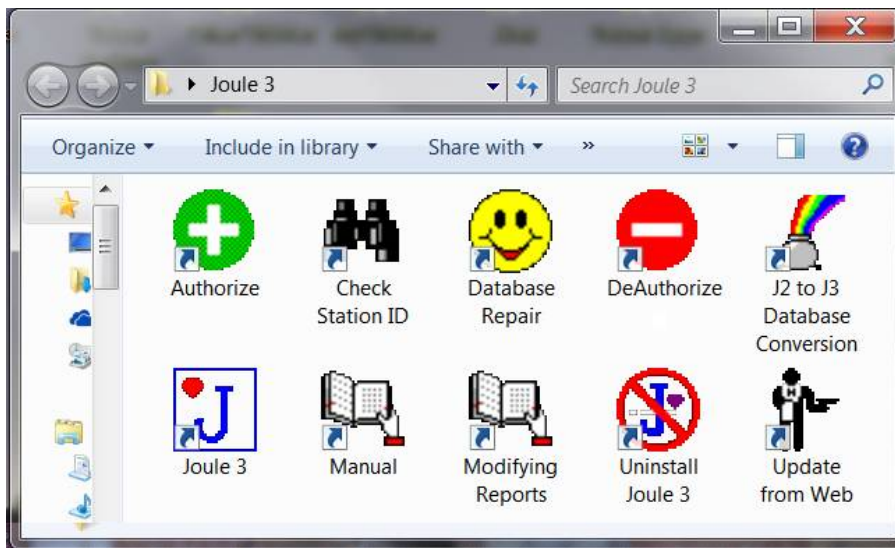


When the installation is done it will return to the desktop.

You should see a new folder like the one shown.

If not, press the F5 key to refresh the desktop.

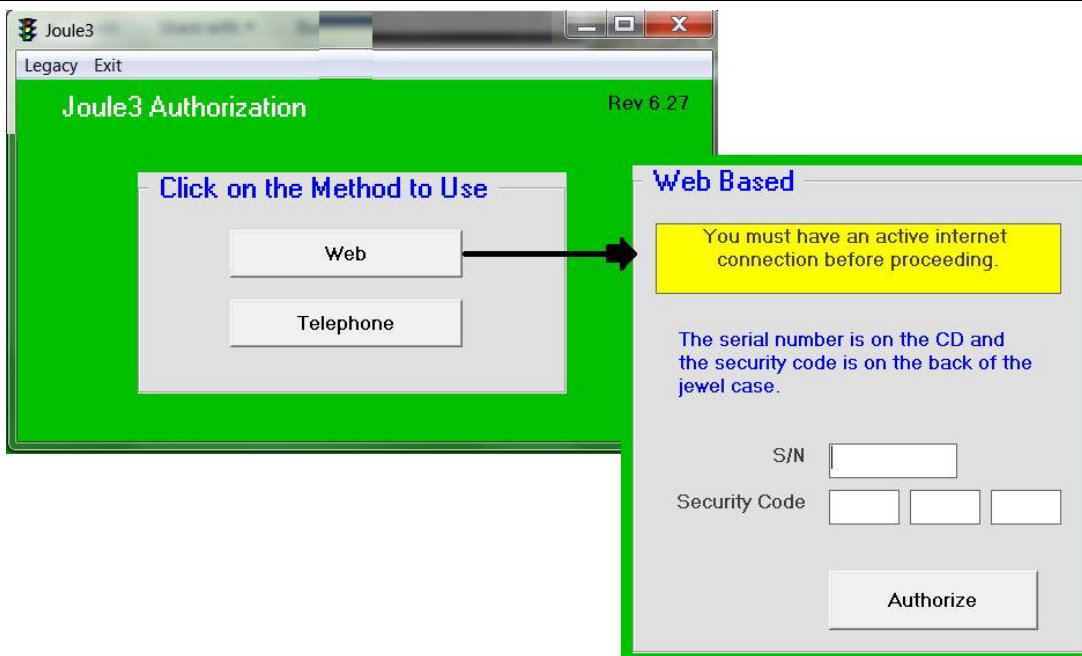
Double-click the folder to open it.



These are the Joule shortcuts.

Before you can run the software it must be authorized.

Double-click the Authorize shortcut.



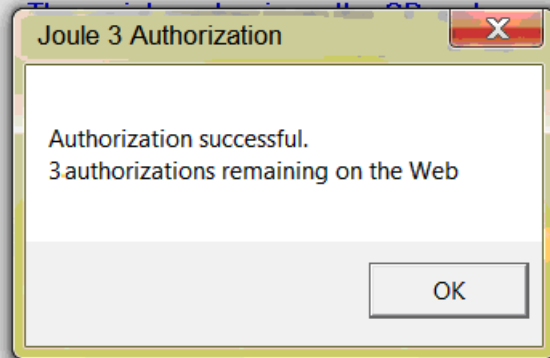
Click the Web button and then enter your serial number and security code.

Click Authorize.

The program will contact Valpar's web site and transfer an authorization token to your computer.

Web Based

You must have an active internet connection before proceeding.



<http://www.sigi3.org/downloads/VWAupdate.pdf>

The Authorization program will give either a message like the one to the left, indicating success, or a failure message.

If the program simply quits with no message then you need to run the update described at URL below the image to the left and try the authorization again.

Once authorization is complete, double-click the Joule 3 shortcut to run the software.

If you get the message to the right:

Run the Update from Web shortcut in the Joule folder. This program may say you are up to date but in actuality you are *too* up to date. Insist on installing the older version.

To access the latest update you will need to renew your SUSS - Software Update and Support Service.

Your Software Update Service expired prior to the date of this version of Joule

If you saved data from your current Joule computer on a USB thumb drive now is the time to copy everything that was saved to the new Joule directory.

Note that there is shortcut to the Joule manual in the desktop folder.

Run the Update from Web shortcut at any time to check for and install updates.

Keep up to date

You can install Joule on as many computers as you like. However, only a certain number of authorizations were purchased, so this will be a limiting factor on how many computers can run Joule at the same time.

You can transfer authorizations between computers by first de-authorizing one and then authorizing another. This process moves a 'token' between Valpar's server and the computer.

Install to multiple computers

Valpar Technical Support is available at 800-528-7070 ext 1. between the hours of 9:00 am and 4:00 pm Mountain *Standard* Time, Monday through Thursday.

**Tech
Support**

Network Installation

- 1) Install Joule to the server by selecting Network under Installation Type.
- 2) For each work station that will run Joule, do an Network Station install at the work station. The installation program will ask for the network path from step 1.
- 3) Authorize Joule *from a work station*, as described above. You only need to do this once. The authorization resides on the server and is accessed by all of the work stations.
- 4) You purchased a fixed number of 'seats' with Joule. At most, that many work stations can be logged into Joule at any one time. When a user exits Joule it frees up a seat for any other work station to use.